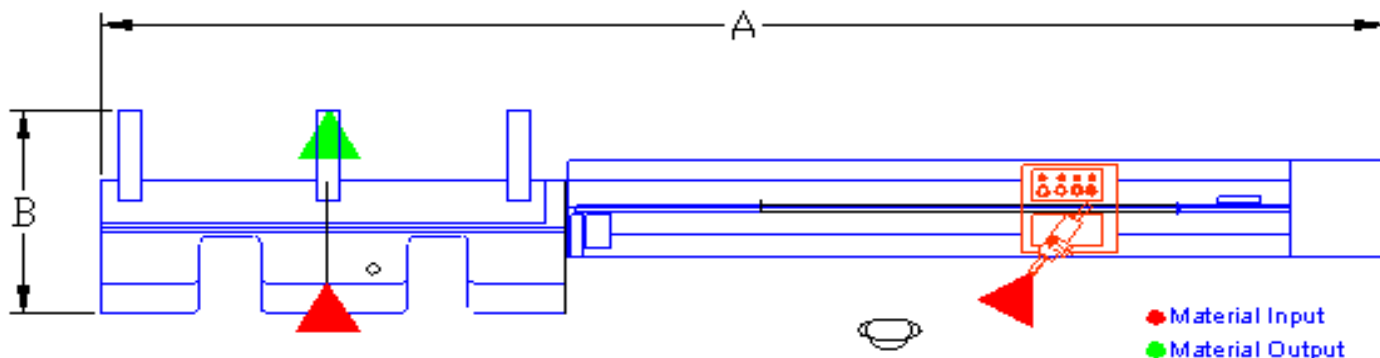


# Baycinco/SL

## MRP-480

### Paint-roller winding machine with tube feeder



## Technical Data

Installed Power	9,5 KW
Power Supply	220/380 V, 50/60 Hz , 3 phase
Air Consumption	80 lt/min at 6 bar
Air Consumption for welding torches	80 m <sup>3</sup> /h at 6 bar
Gas ( Propane ) Consumption	3,5 kg/h at 500 mbar
Water Consumption	350 lt/h at 1 atm
Dimensions ( A x B x H )	10,3 x 1,5 x 2,4 mt
Weight	2700 Kg

## Function and input-output

The machine winds the fabric strips cut by machine CT-20 onto polypropylene tubes. The inner diameter of the tube can be from 30mm up to 55mm wide and its length 3,4m. A new set up and the replacement of some mechanical parts is necessary to switch from one diameter to the other.

The machine, in its standard version, can only wind one tube diameter.

The output is dependent on many factors: kind of gas used, kind of polypropylene, diameter of the tube. Approximate output can be +/- 7m of wound tubes per minute.

**Input** *extruded polypropylene tubes and a fabric stripe*

**Output** *wound tubes ready to be processed by machine CRRA-2500*

Baycinco SL

Avda. Arraona, 34-44

P.I. Can Salvatella

08210 Barberà del Vallès (Barcelona) - Spagna -

Phone: 0034 - 93 - 7181416 Fax 0034 - 93 - 7182715

e-mail: baycinco@baycinco.com

Baycinco/SL

MRP-480

Paint-roller winding machine with  
tube feeder

